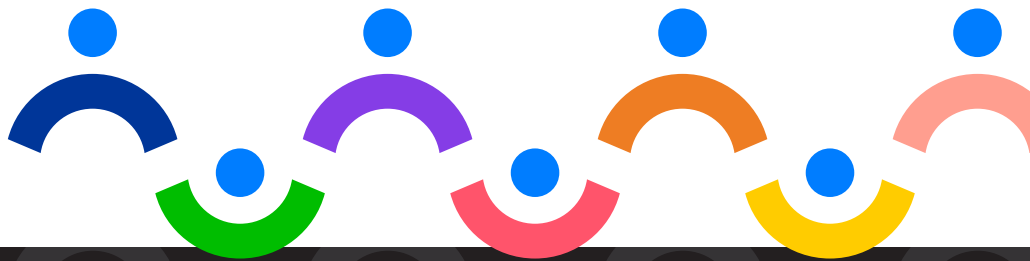


Connect. Expand. Thrive.

World Chambers Federation membership

January 2026



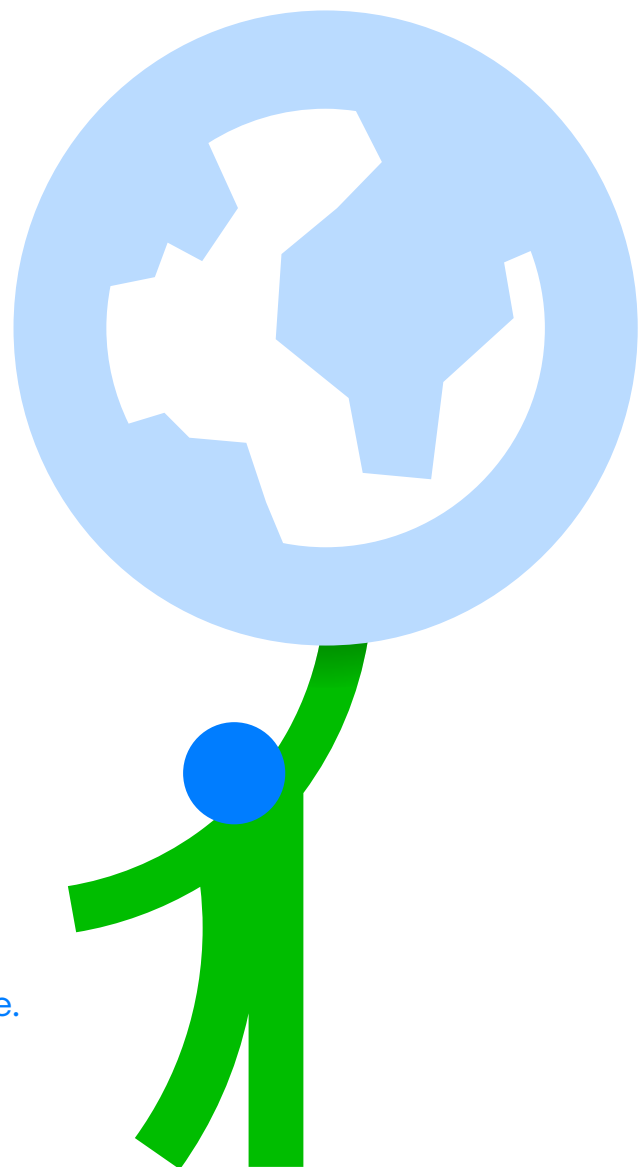
Your partner to power chamber growth.

Join WCF today – included with your ICC membership

The World Chambers Federation (WCF) is the International Chamber of Commerce's (ICC) global network for chambers of commerce. WCF connects chambers and their members across more than 140 countries and territories, making us the largest, most impactful chamber network in the world.

WCF is both a strategic partner and a powerful growth driver for your chamber, delivering the tools, resources and networks your chamber needs to foster a productive business environment. Membership generates connections and business opportunities and can even create new revenue streams.

WCF membership is how chambers expand trade, advocate for business and collaborate on a global scale.



**Join the ICC World
Chambers Federation**

Visit iccwbo.org/membership
to find your national committee.



Thousands of chambers in more than 140 countries are involved in WCF activities and global outreach



“WCF membership has played a key role in expanding our chamber’s international reach. Through engagement with peers at the World Chambers Congress and WCF Summits, and by offering essential services such as the ATA Carnet – which also provides a source of revenue – we have seen a significant positive impact on our chamber.”

Malte Heyne, CEO of the Hamburg Chamber of Commerce, Germany

“WCF connects us to a truly global network of chambers. Through its events, task forces, and digital platforms, we’ve built meaningful partnerships that have led to trade missions across all regions, knowledge-sharing, and lasting collaboration – all made possible by our active engagement with WCF. “

Ovidio Claros Polanco, Executive President, Bogota Chamber of Commerce, Colombia

“Dubai Chambers’ membership in the WCF is instrumental to our role in advancing global trade facilitation and strengthening international partnerships. Trusted ICC tools like ATA Carnets and Certificates of Origin enable us to support the cross-border growth of Dubai-based companies and connect them with new markets. Our active engagement also helps elevate Dubai’s position as a global hub for business and trade, reflected in our co-hosting of the 12th World Chambers Congress – one of the world’s most influential gatherings for chambers of commerce.”

Salem Al Shamsi, Vice President, International Relations, Dubai Chambers



Unlock an array of benefits for your chamber.

WCF is ICC's programme for chambers, giving you unparalleled access and benefits in the collective voice of over 45 million businesses.

Global reach

Connect with leading chambers worldwide.
Build cross-border partnerships and expand influence.

Trade services

Support exporters with trusted trade facilitation, including the possibility to issue ATA Carnet and ICC-labelled Certificates of Origin (or Origin products). Digitise and monetise services with ICC tools.

Recognition and growth

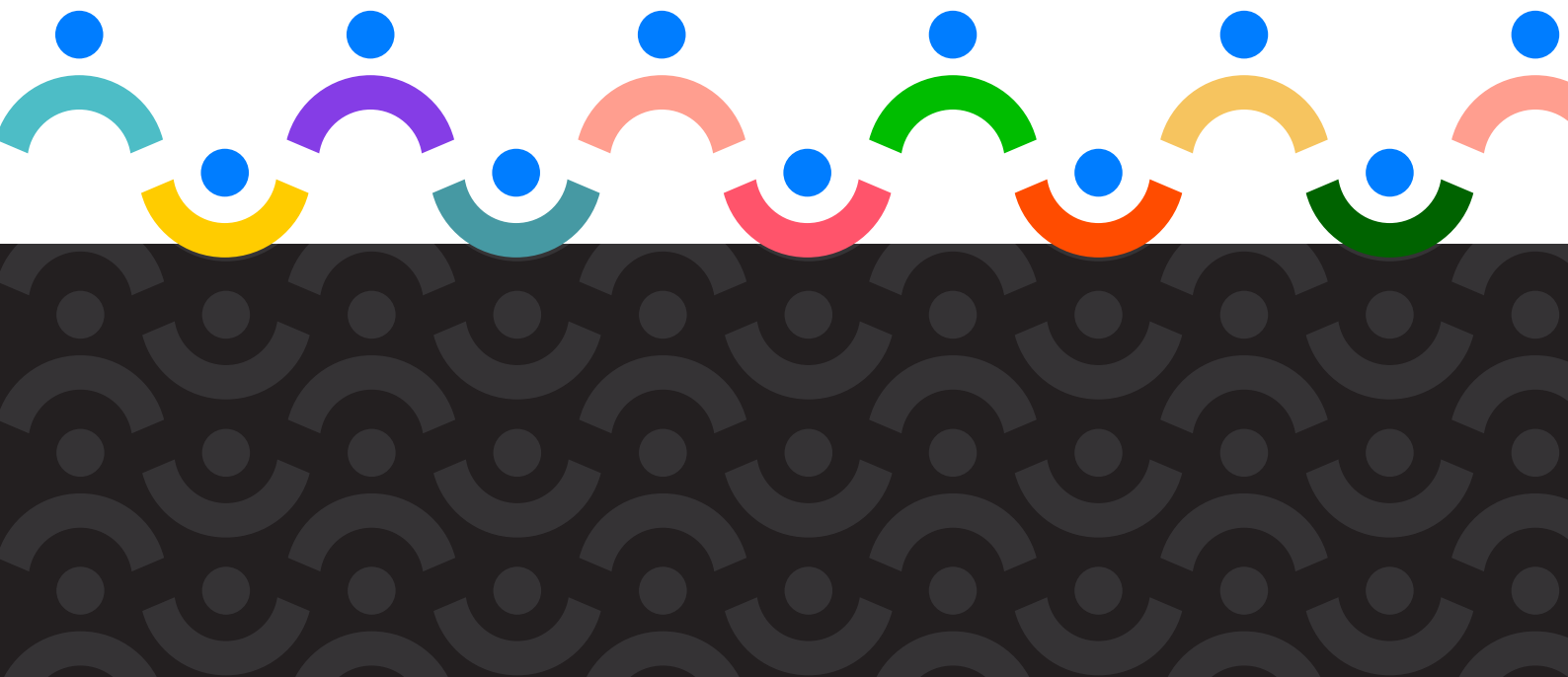
Earn awards, access leadership roles and global visibility. Generate revenue through events, trainings and services.

Policy and advocacy

Shape global business policy through ICC policy commissions. Access insights, reports and entrepreneurship programmes

Empowerment

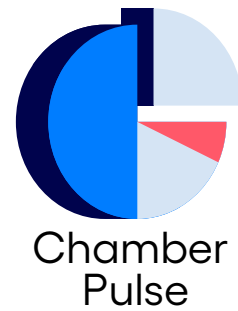
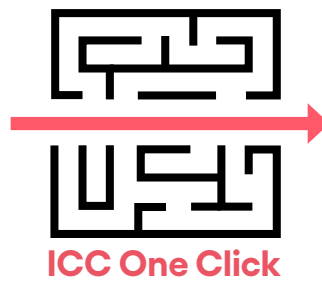
Upskill with the ICC Academy, the Centre of Entrepreneurship webinars for SMEs, and peer learning. Access best practices and improve your operations with our Chamber Benchmarking Tool.



Our key programmes and tools



Passport for goods





Turn your WCF membership into revenue-generating opportunities.

Membership can also be a powerful growth engine for your chamber. WCF members can:

- Leverage the ICC network and partners for endorsements, funding and sponsorships for your chamber's initiatives
- Commercialise trade services like ICC Genesis, ATA carnets and Certificates of Origin
- Re-sell ICC Academy training programmes
- Co-organise events and generate revenue from paid registrations and sponsorship

Get more details on WCF services and benefits

iccwbo.org/WorkingWithChambers

Join today. Grow tomorrow.

Working for and with chambers to better support business – we empower your organisation with extraordinary possibilities.

More access. More opportunities. More ways to grow.

- **A world of connections:** Build meaningful partnerships that drive business
- **Trusted trade services:** Use ICC tools to streamline trade for your members
- **New revenue sources:** Turn WCF programmes into income for your chamber
- **Exclusive access to global insights:** Stay ahead of the curve with ICC intelligence and resources



**Contact ICC in your country to join the
World Chambers Federation**

iccwbo.org/national-committees



**Join the world's largest
chamber network**

iccwbo.org/world-chambers-federation